

EVID 4.2 Surface mount speaker 4"

- Line-array enhanced coverage control
- Magnetically shielded
- Strong-Arm-Mount for easy, flexible aiming
- Transformer versions
- Weather resistant - Conforms to Mil Spec 810 and IEC 529 IP 34



The EVID 4.2 is a very compact full range loudspeaker ideal for indoor and outdoor applications requiring high-quality sound. Its shape and size make it nearly invisible for use in background/foreground music systems for restaurants, bars, patios, retail, and other applications.

The 4.2's three-dimensional elliptic baffle symmetrically locates the 1" Ti high frequency element with a Coherent Coverage Waveguide in front of, and between the 4" low frequency drivers. This careful shaping, location, and 10° splaying of the lf units provides coverage control by the resulting line array. Lobing is controlled by physically "shadowing" the lf transducers from each other over the bandwidth they would normally exhibit interference. EVID's mounting system provides greater range of aiming angles in both horizontal and vertical planes than other types. The curved grille features designed-in weather resistance and a hidden leash for safety.

All models are available in black or white, and can easily be painted to match the décor. Transformer versions are also available for constant voltage systems.

Technical specifications

Frequency range (-10 dB) (Hz) ¹	65 Hz – 20,000 Hz
Power handling (program) (W) ²	200 W
Axial sensitivity (dB SPL 1W/1m) ³	90 dB SPL 1W/1m
Nominal impedance (Ω)	8 Ω
Maximum SPL (continuous) (dB)	110 dB
Maximum SPL (peak) (dB)	116 dB
Coverage angle HxV (°) ⁴	120° x 80°

LF transducer size (in)	4 in
LF transducer size (mm)	90 mm
HF transducer size (in)	1 in
HF transducer size (mm)	25 mm
Protection	Full system
Connector type	Phoenix (removable screw connector); 4-pin Phoenix
Material	Plastic (ABS) (paintable)
"t"-version wattage taps	70 V: 3.25 W 70 V/100 V: 7.5 W, 15 W, 30 W, 8 ohm Bypass
Dimensions (H x W x D) (in)	9.2 in x 5.1 in x 6.5 in
Dimensions (H x W x D) (mm)	234 mm x 127 mm x 165 mm
Weight (lb)	8.50 lb
Weight (kg)	3.90 kg
Shipping weight (lb)	19 lb
Shipping weight (kg)	8.60 kg
Included accessories	SAM, hex key

¹Half space (wall mounting)

²Continuous program rating: 3 dB greater than continuous pink noise rating (IEC-shaped pink noise with 6dB crest factor)

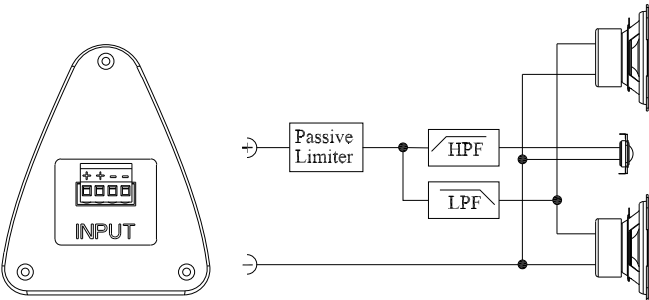
³Average half space (wall mounting)

⁴When mounted with long axis in vertical plane

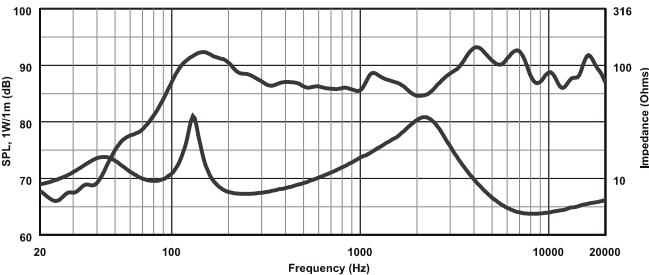
Architectural and engineering specifications

The loudspeaker shall be a two-way system consisting of two 4-inch (102 mm) low-frequency transducers, 1-inch (25 mm) high-frequency transducer with a Coherent Coverage Waveguide, and frequency-dividing network installed in a vented, line array enclosure. The network shall include a passive limiter for both the low frequency and high frequency transducers. The loudspeaker system shall meet the following performance criteria: Power handling, 200 watts of EIA RS-426A continuous pink noise (6 dB crest factor); Frequency response, 65 Hz - 20 kHz (-10 dB from rated sensitivity); Pressure sensitivity, 90 dB at one watt, 200 Hz - 10 kHz at one meter; Impedance, 8 ohms nominal, 6 ohms minimum. The high frequency transducer shall drive a waveguide to evenly cover 120° horizontally by 80° vertically. The enclosure shall be molded of acrylic butyl styrene. The enclosure shall be 12.2-inch (310 mm) high, 6.9-inch (175 mm) wide, 8.5-inch (216 mm) deep. The finish shall be a paintable black or white. The grille shall be zinc plated, powder coated for corrosion resistance, and restrained with a safety leash. The loudspeaker shall be adjustable over a range of 120° horizontally and 80° vertically. The support bracket shall be low profile and integral with the enclosure. The system shall be weather resistant to MIL Spec 810 and IEC 529 IP 34 test conditions. The surface mount loudspeaker shall be the Electro-Voice® EVID model 4.2.

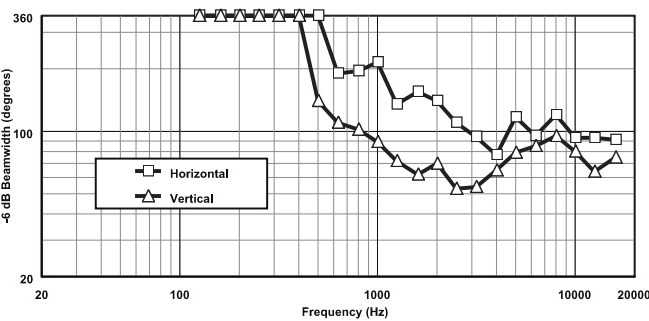
Block diagram



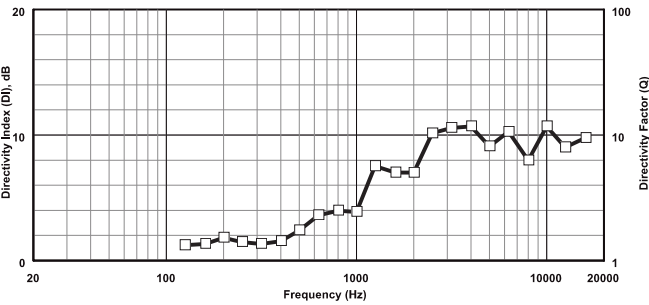
Frequency response



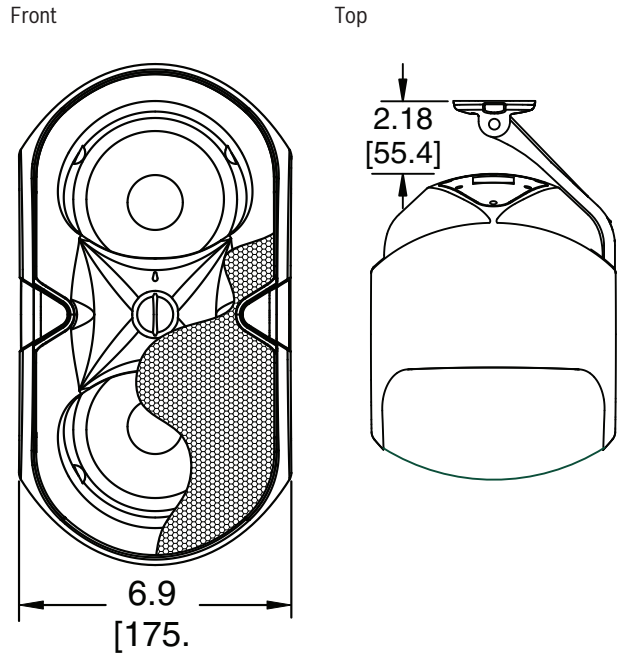
Beamwidth



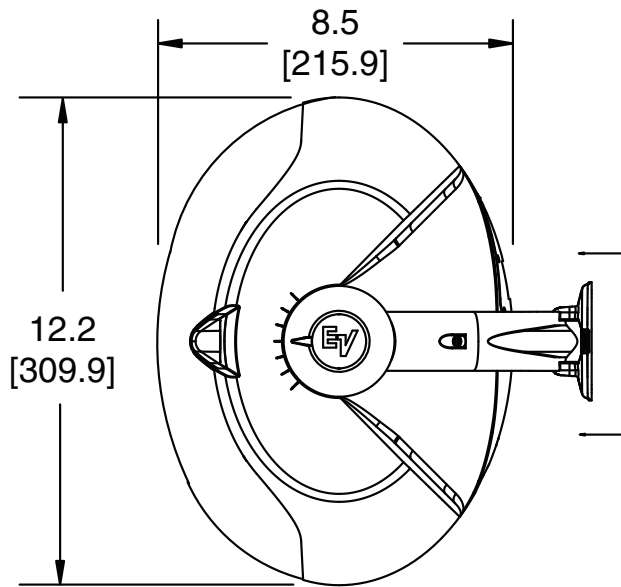
Directivity



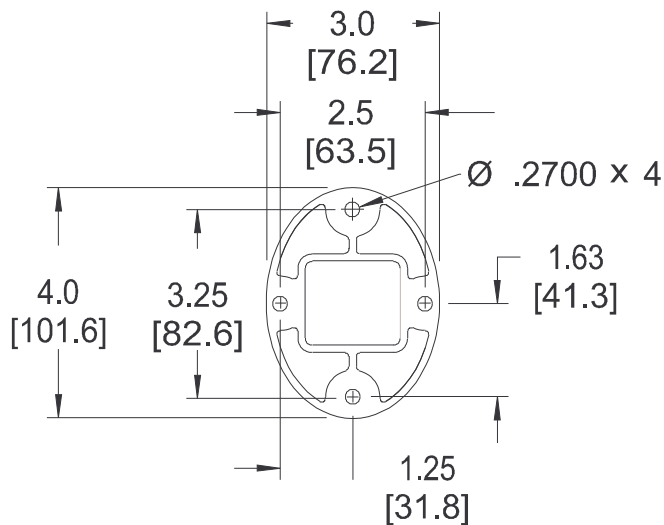
Dimensions



Side



Wall plate



View A-A

Ordering information

EVID 4.2 Surface mount speaker 4" 8 Ohm bk pair
 2x4" / 1", 100 W, 90 dB, 120° x 80°, in/outdoor, black, price per pair
 Order number **EVID 4.2 | F.01U.117.528**

EVID 4.2W Surface mount speaker 4" 8 Ohm wh pair
 2x4" / 1", 100 W, 90 dB, 120° x 80°, in/outdoor, white, price per pair
 Order number **EVID 4.2W | F.01U.117.529**

EVID 4.2T Surface mount speaker 4" 70/100V bk pair
 100 V version of 4.2, (7,5/15/30W), black, price per pair
 Order number **EVID 4.2T | F.01U.117.530**

EVID 4.2TW Surface mount speaker 4" 70/100V wh pair
 100 V version of 4.2W, (7,5/15/30W), white, price per pair
 Order number **EVID 4.2TW | F.01U.117.531**

EVID 12.1 EVID 12.1 BLACK SUB LOUDSPEAKER SYSTEM
 12-inch subwoofer, black
 Order number **EVID 12.1 | F.01U.117.536**

EVID 12.1W EVID 12.1 WHITE SUB LOUDSPEAKER SYSTEM
 12-inch subwoofer, white
 Order number **EVID 12.1W | F.01U.117.537**

Accessories

HS-3 HS-3 HRZNTL DSK STND,EVID 3.2/4.2 SER,PR
 Horizontal mount desk stand for EVID 3.2 and EVID 4.2
 Order number **HS-3 | F.01U.117.553**

VS-4 VS-4 VERTICAL MOUNT DESK STAND FOR EVID
 Vertical mount desk stand for EVID 4.2
 Order number **VS-4 | F.01U.117.551**

AB-ZE-LB Array bracket adaptor for 2 or 4 ZX1i
 Array bracket adaptor for 2 or 4 ZX1i or EVID systems, black
 Order number **AB-ZE-LB | F.01U.274.382**

TC-4B Terminal cover 4" black
 Weatherized terminal cover for EVID 4.2; black
 Order number **TC-4B | F.01U.117.559**

TC-4W Terminal cover 4" white
 Weatherized terminal cover for EVID 4.2, white
 Order number **TC-4W | F.01U.117.560**



<https://www.electrovoice.com>