

OMNEO

OMNEO Firmware Upload Tool



BOSCH

en User guide

Table of contents

1	Introduction	4
2	Download	5
3	Installation	6
3.1	Installation directory	6
3.2	Installation procedure	8
4	Firmware update for RCM-28 devices	12

1 Introduction

This application note covers the installation and use of the Bosch OMNEO Firmware Upload Tool (in the following document, referred to as FWUT). As an example the update process of a RCM-28 Remote Control Module will be shown.

System requirements:

Processor: Dual core CPU

OS: Windows 7 (32-Bit or 64-Bit), Windows 8 or Windows 8.1

RAM: 2 GB (more is recommended)

Hard Disk: 2 GB of free space

Video: 1024x768, High Color (16 Bit)

Network: Ethernet port (Gigabit Ethernet port recommended for use with audio data)

**Notice!**

Administrator rights are mandatory both for installing and executing the FWUT.

2 Download

The Bosch OMNEO FWUT can be downloaded under:

- www.dynacord.com/en/downloads/
- www.electrovoice.com/downloads.php
- For Bosch OMNEO conferencing products the OMNEO FWUT is installed as part of the conferencing software. No separate download is offered.

3 Installation

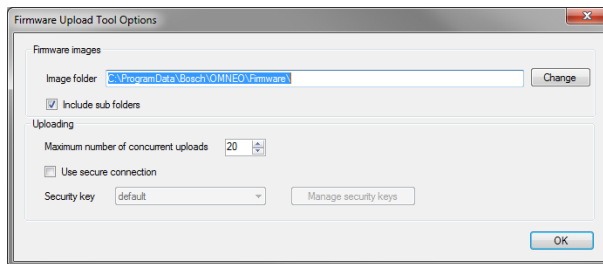
3.1 Installation directory

Depending on the operating system there can be different default installation paths for the **application**:

- Windows 7 (32 Bit)
 - Application: C:\Program Files(x86)\Bosch\OMNEO\Firmware Upload Tool
- Windows 7 (64 Bit), Windows 8 or Windows 8.1
 - Application: C:\Program Files\Bosch\OMNEO\Firmware Upload Tool

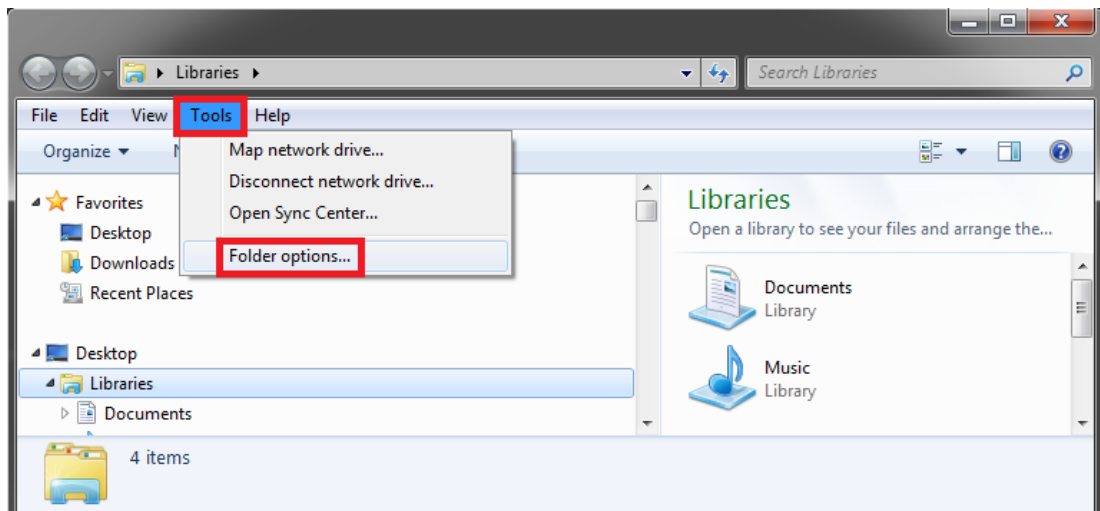
The **firmware** files are always installed under:

- Windows 7 (32 and 64 Bit), Windows 8 or Windows 8.1
 - Firmware: C:\ProgramData\Bosch\OMNEO\Firmware
 - Frequently, new OMNEO device firmware is distributed via the web or an updated version for the device's control software, such as IRIS-Net. In this situation, this firmware file needs to be copied into the .\OMNEO\Firmware\ folder first before the update can be started.
 - Alternatively the path to the folder which contains the firmware can be adjusted after the installation of the new software or download of the new firmware in the settings of the FWUT. In the menu bar go to File > Options... > Image folder and click on the Change button. Then browse for the folder with the firmware file.

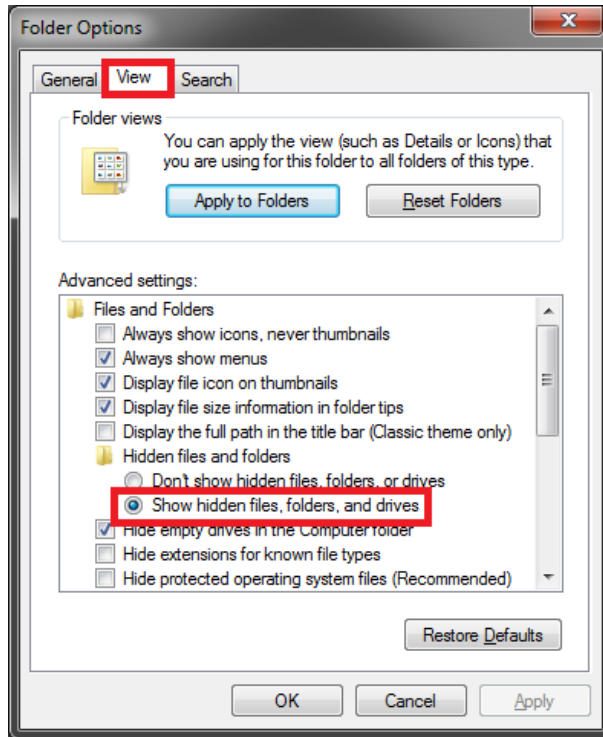


If the C:\ProgramData\ folder is not visible on your computer please activate the visibility of hidden folders under:

1. Go to Windows Explorer > Menu bar > Tools > Folder Options



2. In the Folder Options dialog go to View >Advanced settings and check Show hidden files, folders and drives option.



3.2 Installation procedure

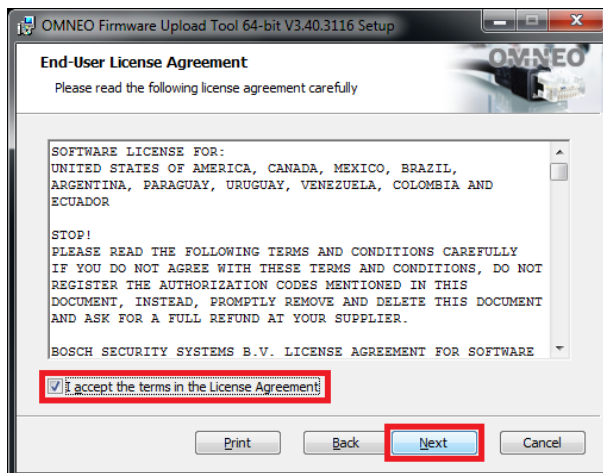
After downloading the FWUT please run one of the following, depending on the system on which the FWUT is to be installed:

- Windows 7 (32 Bit)
 - SetupOMNEOFirmwareUploadTool.msi
- Windows 7 (**64** Bit), Windows 8 or Windows 8.1
 - SetupOMNEOFirmwareUploadTool**64**.msi

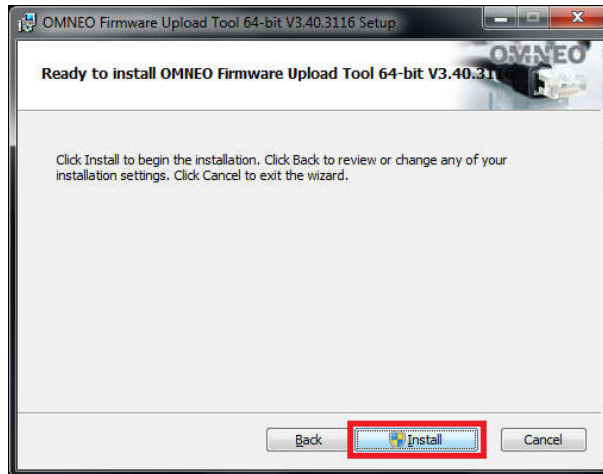
1. The OMNEO Firmware Upload Tool Setup dialog opens. Click on the Next button.



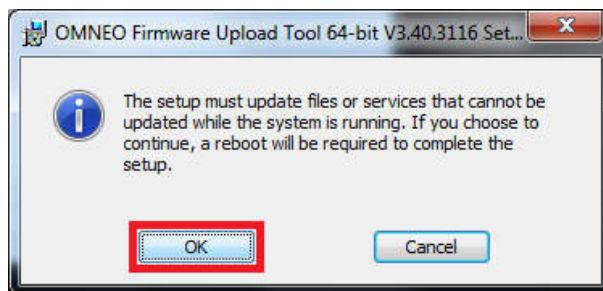
2. Read and accept the End-User License Agreement. Click on the Next button.



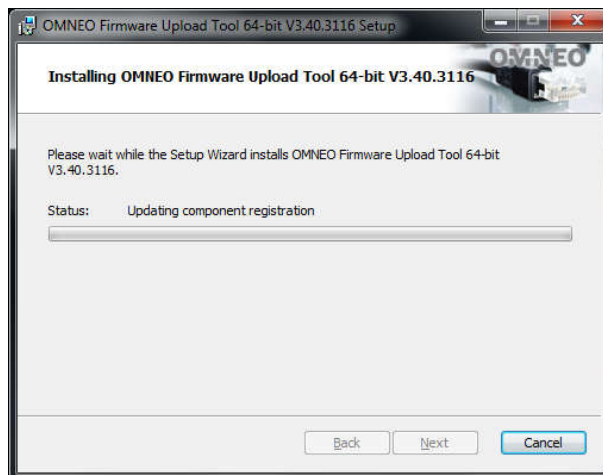
3. Start the installation of the FWUT by clicking on the Install button.



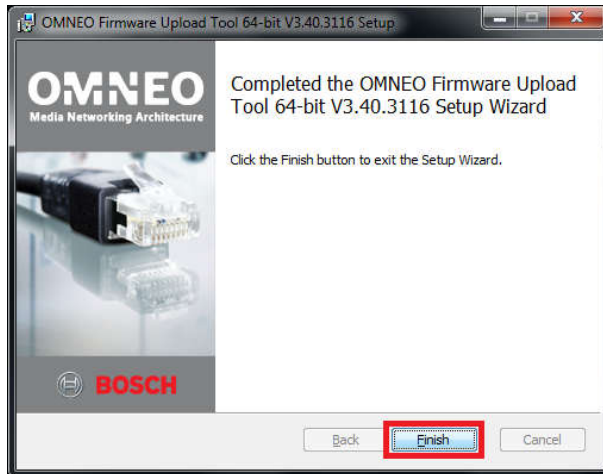
4. The following information may appear which you can confirm with the OK button.



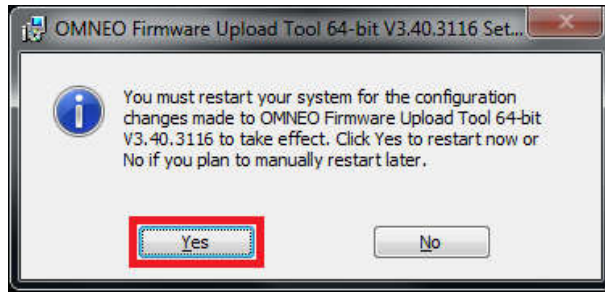
5. The installation is running.



6. After the installation is finished click on the Finish button.



7. You need to restart your computer before the FWUT can be used. Click on the Yes button to restart your computer.



4 Firmware update for RCM-28 devices

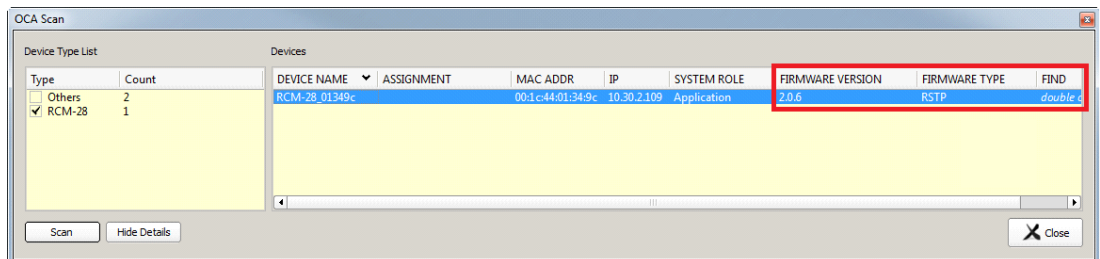


Notice!

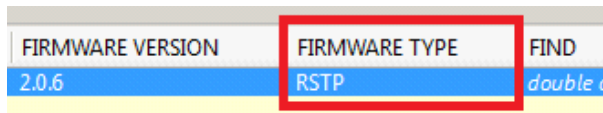
The PC's IP address for the update must be in the same range as the IP addresses of the devices to be updated. It can be either statically assigned or dynamically assigned via a DHCP server or Zero-Config mechanism.

In the case of the RCM-28 module, early firmware versions were available both in a Rapid Spanning Tree Protocol (RSTP) version and a Glitch-Free Redundancy version. Since RCM-28 firmware version 2.0.06, the network operation mode can be selected via the IRIS-Net OCA Scan dialog.

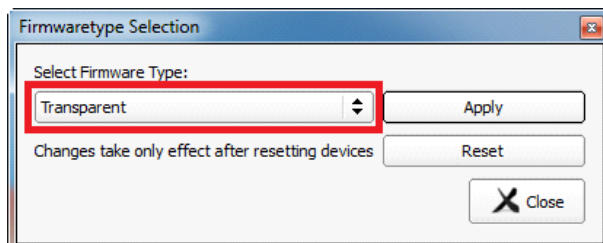
Go to IRIS-Net > Tools > OCA Scan.



Clicking in the Firmware Type column will open the Firmware Type Selection dialog.



Select Firmware Type allows the selection of either Transparent, RSTP or Glitch-Free mode.

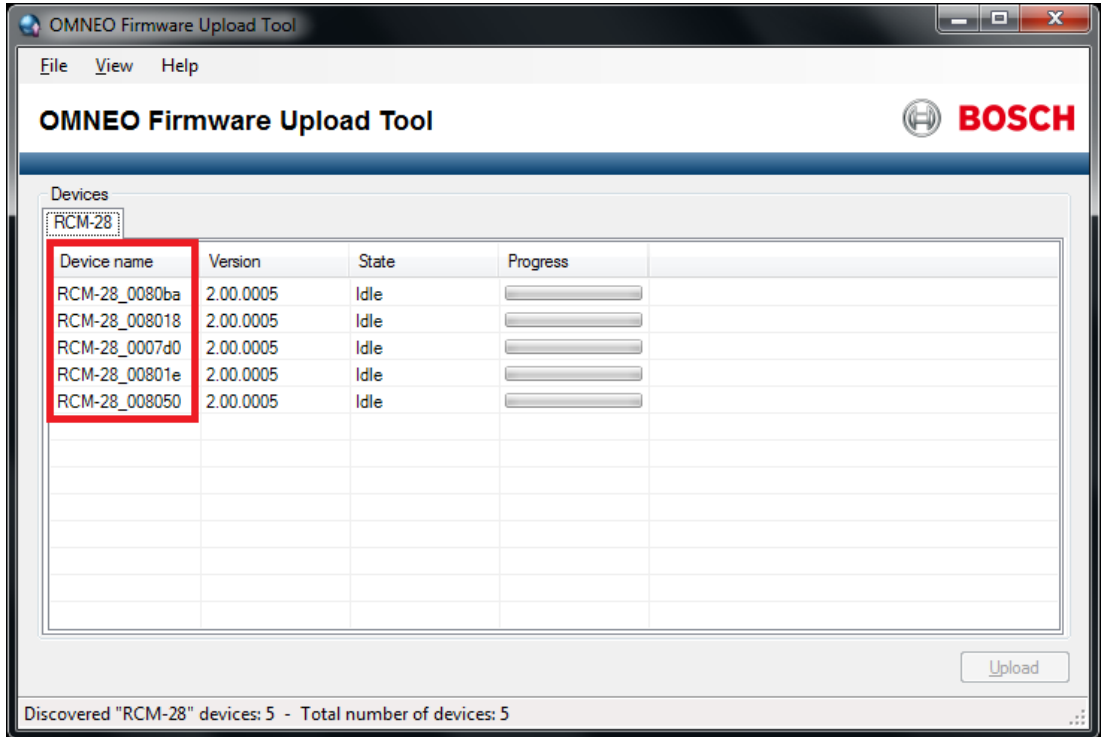


Update procedure

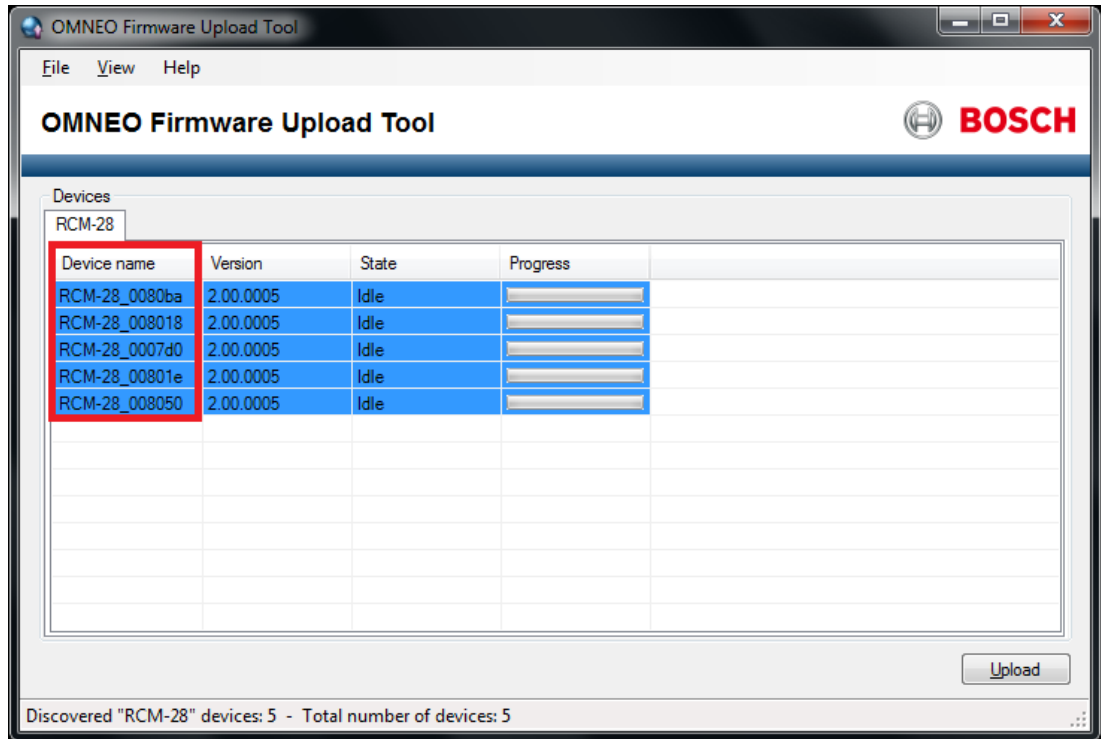
1. Make sure you have administrator rights and start the OMNEO FWUT.



2. The tool should automatically discover all OMNEO devices on your network.



3. Select the devices you want to update, then click on the Upload button.

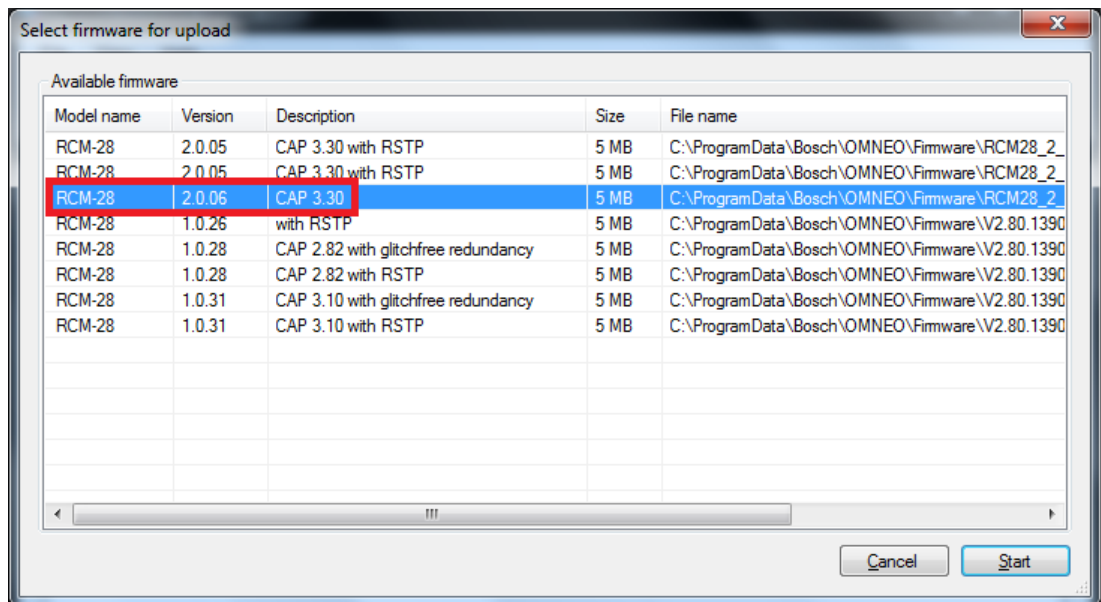


- The Select firmware for upload dialog opens. Select the firmware file that is to be used for the update and click the Start button.

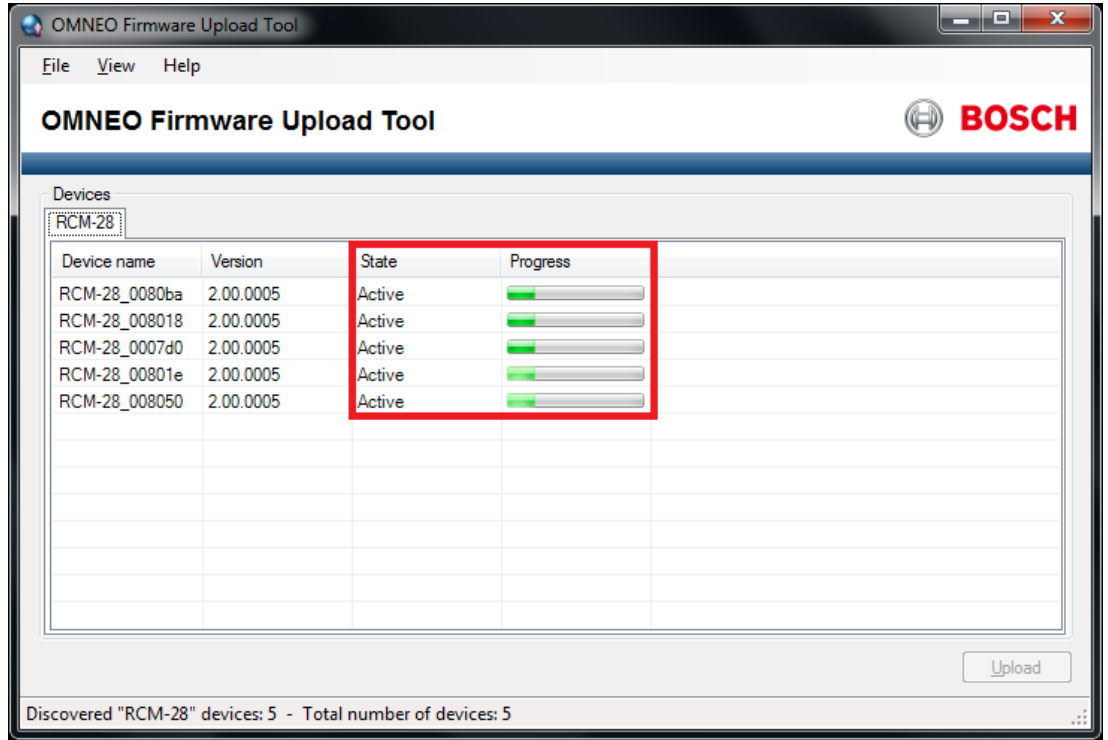


Notice!

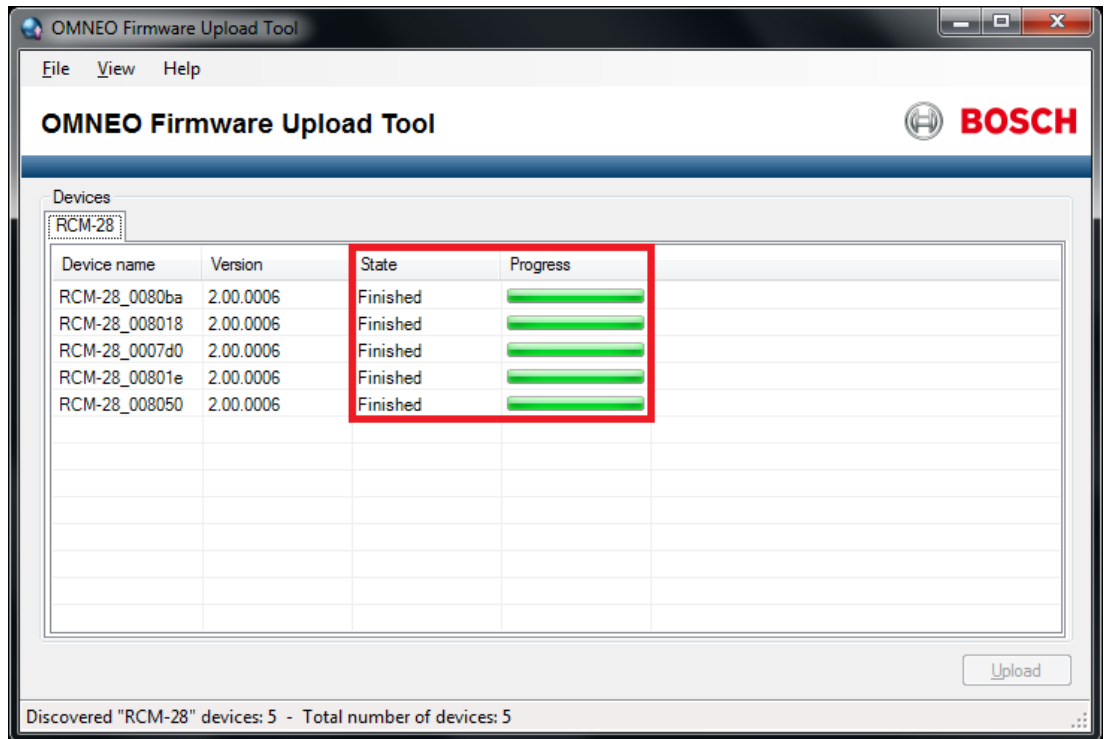
Older firmware files for the RCM-28 module were available in dedicated versions for RSTP or Glitch-Free Redundancy mode. Current firmware, such as the version 2.0.06 in the screenshot above, allow switching between RSTP/Glitch-Free and Transparent modes via the IRIS-Net application.



- The firmware update will start. The State column will show Active state, and the progress bars in the Progress column will show how far the update has proceeded.



- 6. When the update has finished the State column shows Finished state and the progress bars are solid green. The FWUT may now be closed.



Bosch Security Systems B.V.

Torenallee 49

5617 BA Eindhoven

The Netherlands

www.boschsecurity.com

© Bosch Security Systems B.V., 2015