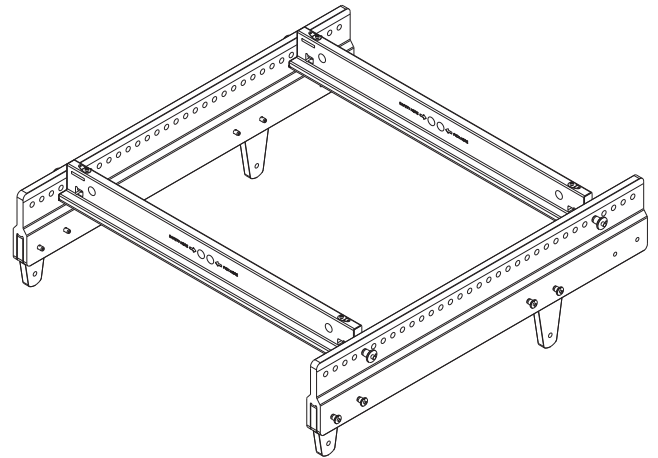


X12-125F-GRID GRID FOR X12-125F SUBWOOFERS

- Supports up to 16 X12-125F subwoofers
- Modular design

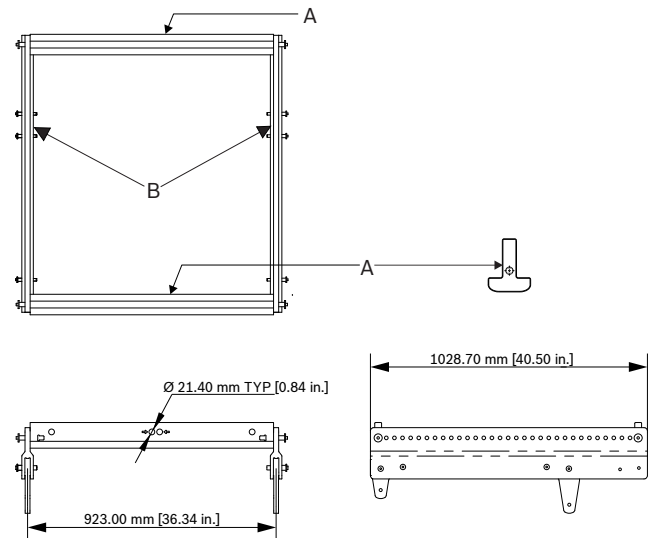


The X12-125F-GRID grid is rated for a maximum hang of up to nine X12-125F subwoofers when suspended from a single middle point and up to 16 subwoofers when hung from two lateral points on the same spreader bar. The modular design of the grid includes all parts needed for quick assembly and disassembly. Model the array in Electro-Voice line-array configuration software before deployment to ensure that the configuration is valid and safe.

Technical specifications

Color:	Black
Dimensions (H x W x D):	343 mm x 1011 mm x 1029 mm (13.5 in x 39.8 in x 40.5 in)
Net weight:	96.6 lb (43.8 kg)
Shipping weight:	107.6 lb (48.8 kg)

Dimensions:



Letter	Description
A	Spreader bar assemblies
B	Top grid side bar assemblies

Compatible System Solutions:

X12-125F 2X15" flying subwoofer

Caution!

Electro-Voice loudspeakers and rigging accessories should be suspended overhead only in accordance with the procedures and limitations specified in the user documentation and installation manual. Electro-Voice products should be suspended with certified rigging hardware by an authorized rigging professional and in complete compliance with local, state, and federal overhead suspension ordinances.



For more information, see the X-LINE ADVANCE System Rigging & Transport Installation manual (F.01U.310.953).

Parts included

Quantity	Component
2	Spreader bar assemblies
2	Main grid rear link assemblies
2	Main grid front link assemblies
2	Top grid side bars
1	Installation manual
1	Datasheet
1	Warranty card

Ordering information

X12-125F-GRID GRID FOR X12-125F SUBWOOFERS
Grid for X12-125F subwoofer, black
Order number **X12-125F-GRID**

Represented by:

Germany:
Bosch Sicherheitssysteme GmbH
Robert-Bosch-Ring 5
85630 Grasbrunn
Germany

Bosch Security Systems, Inc.
12000 Portland Avenue South
Burnsville MN 55337
USA

www.electrovoice.com