



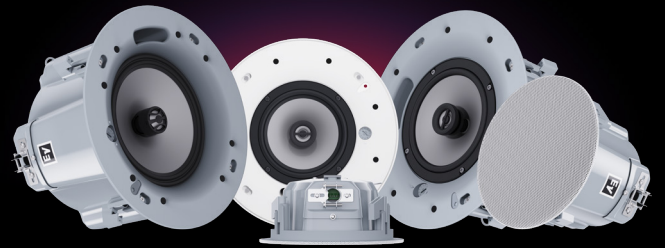
Electro-Voice

NEXT-GENERATION EVID CEILING SPEAKERS

SUPERIOR CEILING SOUND, SIMPLIFIED



EVID-C **G2**



EVID-EC

- The next generation of the successful EVID-C series ceiling speaker series features 12 new models.
- Including seven "C" standard versions and five "EC" entry versions.
- Providing mix-and-match price/performance options tailored to precisely address the audio requirements of each area in an installation.

SIMPLE, FAST AND SAFE INSTALLATION

The EVID-C-G2 models feature a new SwiftLock mounting mechanism. It supports quick, precise and secure attachment to the ceiling with a simple push-and-lock mechanism for hassle-free installation or replacement.



DESIGNED WITH THE INTEGRATOR IN MIND

The easy-access front-baffle wattage tap and side-access terminal blocks make adjustment and connection simpler than ever. All models feature easy-attach magnetic grilles.



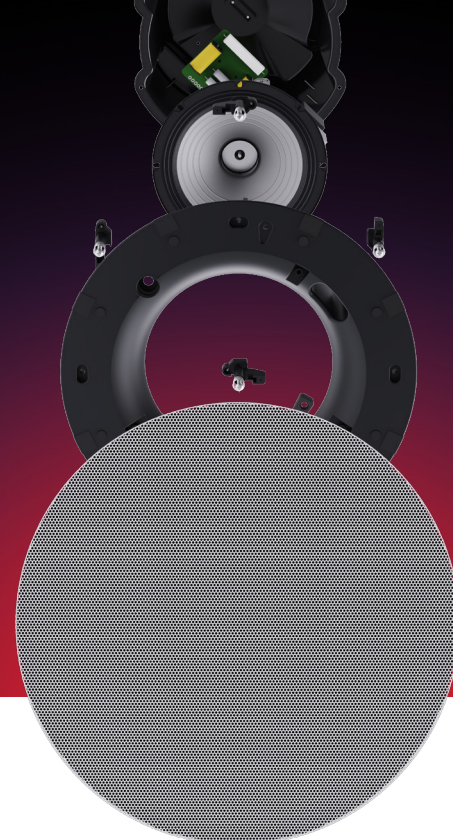
Learn more at electrovoice.com

Information in this document is preliminary and subject to change without notice. All trademarks are the copyrights of their respective owners. ©2024 Bosch Security Systems, LLC

SUPERIOR AUDIO WITH STREAMLINED AESTHETICS

All models benefit from Electro-Voice's patented SST (Signal Synchronized Transducers) technology – a patented approach to time-aligning the low- and high-frequency transducers that allows a larger waveguide to fit inside a more compact enclosure, resulting in enhanced acoustic performance and pattern control for exceptional full-range intelligibility. Shallow profiles allow the speakers to fit into tighter spaces, with no compromises in sound quality.

Standardized outside and cut-out diameters add to the integrator-friendly feature set. The new models expand on the same-diameter models introduced with the previous EVID-C series, adding to the standard 11" diameter option with new 7" and 13" diameter options to ensure more consistent appearance across multi-model installations.



EVID-C-G2

SAP	CTN	Family name	Short description
F.01U.417.779	EVID-C4.2-G2	EVID-C-G2	Ceiling speaker 4" 70/100V white
F.01U.417.780	EVID-C4.2LP-G2	EVID-C-G2	Ceiling speaker 4" 70/100V low-profile white
F.01U.417.781	EVID-C6.2-G2	EVID-C-G2	Ceiling speaker 6.5" 70/100V white
F.01U.417.782	EVID-C6.2LP-G2	EVID-C-G2	Ceiling speaker 6.5" 70/100V low-profile white
F.01U.417.783	EVID-C8.2-G2	EVID-C-G2	Ceiling speaker 8" 70/100V white
F.01U.417.784	EVID-C8.2HC-G2	EVID-C-G2	Ceiling speaker 8" 70/100V high ceiling white
F.01U.417.785	EVID-C8.1S-G2	EVID-C-G2	Ceiling subwoofer 8" 70/100V white

EVID-EC

SAP	CTN	Family name	Short description
F.01U.417.786	EVID-EC3.1	EVID-EC	Ceiling speaker 3" 70/100V white
F.01U.417.787	EVID-EC4.2	EVID-EC	Ceiling speaker 4" 70/100V low-profile white
F.01U.417.788	EVID-EC6.2	EVID-EC	Ceiling speaker 6.5" 70/100V white
F.01U.417.789	EVID-EC6.2E	EVID-EC	Ceiling speaker 6.5" 70/100V EVAC white
F.01U.417.790	EVID-EC8.2	EVID-EC	Ceiling speaker 8" 70/100V white

ACCESSORIES

SAP	CTN	Family name	Short description
F.01U.420.258	C-RG-S-BK	EVID small black grille	Round, magnetic grille, small, black
F.01U.420.259	C-RG-M-BK	EVID medium black grille	Round, magnetic grille, medium, black
F.01U.420.260	C-RG-L-BK	EVID large black grille	Round, magnetic grille, large, black
F.01U.420.261	C-SQ-M-WH1	EVID medium square grille	Square, magnetic grille, medium, white



Learn more at electrovoice.com

Information in this document is preliminary and subject to change without notice. All trademarks are the copyrights of their respective owners. ©2024 Bosch Security Systems, LLC